

Xerox DocuMate® 700

The Ultimate Flexible Scanning Solution for Large Documents

- A3 (11" x 17") USB Flatbed Scanner
- Versatile flatbed option for sheetfed scanner or direct connect to PC
- Kofax VRS delivers perfect scans from imperfect originals
- 9 Visioneer OneTouch pre-programmed 'scan-to' destinations
- Hi-speed USB 2.0 interface (USB 1.1 compatible)

Xerox DocuMate 700

The Xerox DocuMate 700 is an A3 flatbed scanner with a built-in USB hub which enables it to be connected directly to a PC and a DocuMate ADF scanner to provide additional flatbed capability. 'Daisy-chaining' the scanners to a PC, brings total flexibility to the complete DocuMate scanner range. In order to complement existing ADF scanners, the Xerox DocuMate 700 has been designed specifically for departmental or production scanning environments, offering the opportunity to undertake a wider variety of scanning tasks.

Powerful Technology

The DocuMate 700 can scan documents to 9 preset, yet completely configurable, destinations using Visioneer OneTouch technology. This enables your documents to be scanned with the correct settings for resolution, colour, cropping, file format and then delivered to virtually any application, folder or device – all at the touch of a button! Imagine the workflow possibilities of delivering perfectly scanned documents to email, Xerox DocuShare or a custom web application for your enterprise. OneTouch technology is not only a great productivity gain, but it greatly reduces the training requirements for scanner users and increases your return on investment.

Total Flexibility

The DocuMate 700's powerful software, robust functionality and hardware specification deliver the speed and quality that is required for production and departmental scanning, providing the opportunity to do more in your scanning environment than ever before. Flatbed scanning offers the option to scan a wide variety of documents, such as books, magazines, plastic cards and fragile paper. Now there is no need to install numerous flatbed scanners across a network if the majority of users do not require this function on a frequent basis. You now have a new option to simply add flatbed capability to your existing set-up, saving you time and money. The generous flatbed size enables you to scan large documents up to A3 (11 x 17") size, even if the connected desktop scanners are only A4 (8½ x 11", US Letter) size.



Xerox DocuMate 700

Visioneer OneTouch



Visioneer OneTouch is an easy to use utility that connects the DocuMate scanner with a powerful set of scanner settings to greatly improve the efficiency of your workflow – so that with one touch, the document is scanned automatically to email, Word, your printer, or simply a file folder.

In addition to scanning directly to all popular destinations, Visioneer OneTouch also links the DocuMate Scanner with industry-leading document management software, such as Microsoft SharePoint, DocuWare and Xerox DocuShare – forming an easy to use workflow from paper to a selected destination. A Software Development Kit (SDK) is also available which provides the ability to develop specific links and integrate them into the Visioneer OneTouch control panel quickly and easily.

DocuMate 700 Product Specifications

| | | | |
|---------------------------------------------------------------|-----------------------------------------------------|-----------|----------|
| Xerox Part No: | 003R98830 | | |
| Scan Speeds: Seconds Per Page | Black & White | Greyscale | Colour |
| A4 size (8.5" x 11") | 2.8 secs | 2.6 secs | 4.2 secs |
| A3 size (11" x 17") | 3.5 secs | 3.5 secs | 5.7 secs |
| Optical Resolution | 600 dpi | | |
| Output Bit Depth | 24-bit colour, 8-bit greyscale, 1-bit black & white | | |
| Scan Method | CCD | | |
| Control Method | 2 Buttons | | |
| Interface | Hi-Speed USB 2.0 (USB 1.1 Compatible) | | |
| Dimensions not including paper trays (width x depth x height) | 592 x 432 x 133 mm (23.3" x 17" x 5.25") | | |
| Weight | 7.6 Kg (16.75 lbs) | | |
| Light Source | Cold Cathode Fluorescent Lamp (CCFL) Image | | |
| Sensor | Charge Coupled Device (CCD) | | |
| Duty Cycle | 3,000 pages /day | | |
| Warranty | 1 Year | | |

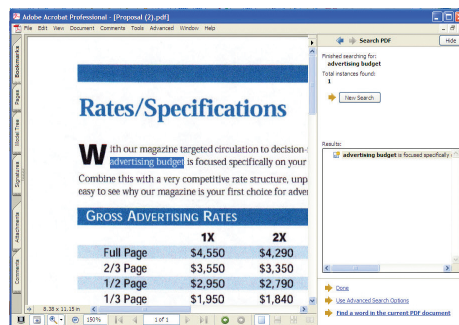
For further information please visit: www.xeroxscanners.co.uk



Kofax VRS technology

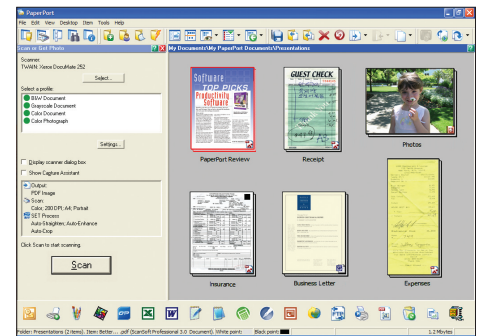
Kofax VRS is an award winning patented technology that automatically ensures the best possible image quality and OCR accuracy for scanned document images. As pages pass through the scanner, VRS performs a multipoint inspection of each document, instantly checking and adjusting alignment (skew), brightness, contrast and image clarity.

Text Searchable PDF



Transform volumes of paper or photos into organised digital files that can be quickly found, used and shared. In searchable PDF format, the user can instantly search documents for keywords or phrases. This provides additional archival benefits beyond traditional storage, and the widely accepted PDF format lets everyone view and print documents – on any computer.

Nuance PaperPort



PaperPort is the easiest way to turn volumes of paper into organised digital files that you can quickly find, use and share. Stop wasting time looking for paper documents scattered around your office, the Xerox DocuMate 700 can scan documents directly to PDF files.

PaperPort supports one-click creation of PDF files from Microsoft Office documents and supports Print-to-PDF using other Microsoft Windows applications. A wide range of image formats can also be converted into PDF – including TIFF, MAX, JPG, BMP and GIF.

Scan to network drives by adding new destinations to the PaperPort folder list allows scanning direct to the desired location. Scan straight to your My Documents folder or to a network drive.

Nuance OmniPage Pro

Provides a precise OCR and layout retention solution, quickly turning scanned documents into editable, formatted text. The text can then be used in virtually any word processing, desktop publishing or web publishing program.

Minimum System Requirements

- Pentium® IV or equivalent processor
- Windows® 2000, XP, 32-bit or 64-bit Vista
- 512 MB RAM for Windows 2000 and XP
- 1 GB RAM Windows Vista
- 500 MB available hard drive space
- DVD-ROM drive
- USB 2.0 port

Contents

- DocuMate 700 Scanner
- Power Supply
- USB 2.0 Cable
- Quick Install Card
- Technical Support Card
- DVD-ROM including:
 - User's Manual
 - Visioneer OneTouch
 - Nuance PaperPort
 - Nuance OmniPage Pro
 - Kofax VRS
 - Scanner Drivers (TWAIN, ISIS and WIA Driver)

